

SHIRE OAK ACADEMY

TURNING POTENTIAL INTO EXCELLENCE



SIXTH FORM PROSPECTUS



THE MERCIAN TRUST

CONTENTS

Shire Oak Academy Values.....	4
MAT Specialist Subjects.....	5
Fast Track Your Future.....	6
Studying At Shire Oak.....	8
Facilitating Subjects.....	8
Things To Consider.....	9
50 things to do before you're 18 ^¾	11
An Introduction To T-Levels.....	12
Education & Childcare - T-Level.....	14
A Level Art And Design (Fine Art) - OCR.....	15
A Level Biology - OCR.....	16
BTEC Level 3 Extended Certificate in Business.....	17
A Level Chemistry - OCR.....	18
A Level Computer Science - OCR.....	19
Level 3 Diploma in Criminology - WJEC.....	20
A Level Drama and Theatre Studies - AQA.....	21
A Level Economics - AQA.....	22
A Level English Language - AQA.....	23
A Level English Literature - OCR.....	24
A Level Film Studies - Eduqas.....	25
A Level French - AQA.....	26
A Level Geography - AQA.....	27
Level 3 Cambridge Technical Ex. Certificate In Health and Social Care - OCR.....	28
A Level History - AQA.....	29
A Level Ancient History/Classics - OCR.....	30
A Level Mathematics - Edexcel.....	31
Level 3 BTEC National Extended Certificate in Creative Digital Media.....	32
Level 3 Applied Diploma in Medical Science - WJEC.....	33
Level 3 BTEC Musical Theatre / Performing Arts.....	34
A Level Music - OCR.....	35
A Level Philosophy and Ethics - OCR.....	36
A Level Art & Design - Photography - OCR.....	37
A Level Physics - OCR.....	38
A Level Politics - AQA.....	39
A Level Product Design - OCR.....	40
A Level Psychology - Edexcel.....	41
Level 3 Cambridge Technical Ex. Certificate in Sport and Physical Activity - OCR.....	42
Applying To Sixth Form.....	43



SHIRE OAK ACADEMY
TURNING POTENTIAL INTO EXCELLENCE

It gives us great pleasure to introduce ourselves: Annabel Stoddart the Executive Headteacher and Neal Critchley the Associate Headteacher.

Together we are the driving force behind our Academy's mission: "Turning Potential into Excellence." Shire Oak Academy has always been a wonderful place to learn and work. We are determined that Shire Oak Academy builds on it's legacy and continues to flourish and maintain it's position at the heart of our community.

Shire Oak Academy is an exciting and vibrant learning community where students enjoy success in and outside of the classroom. We aim to provide an outstanding, positive learning environment and value the high quality of relationships that enable this to be true of all aspects of academy life. Our Academy mission, 'Turning Potential into Excellence' is important to us as we prepare our students for successful adult lives in an increasingly competitive world. We support and encourage our students to try their best to achieve success in all areas and help prepare them for their future choices, not only in their academic learning but also within other areas such as music, sport, art and drama.

We have a strong focus on academic achievement throughout the academy and develop our young people to be independent and resilient learners. We are proud of our inclusive ethos and of the positive relationships that we build with parents and the local community. We believe that all students can achieve.

The predominant focus of the academy is on working with students to develop the attitudes, skills and knowledge which combine to create successful and independent learners. Our ASPIRE values guide us throughout our work in this area.



SHIRE OAK ACADEMY VALUES

At Shire Oak Academy we believe that traditional education is only one element of learning and that today’s children are entering a rapidly changing world with new technologies and an evolving economic landscape which will affect them both professionally and in their roles as informed citizens, partners, parents, and members of their communities.

Every child has the potential to succeed and we encourage them to dream big and to be fully involved in school life. We promote qualities of selflessness, courage, honesty and respect, whilst developing confidence in all areas of school life. This will help each child fulfil their true potential for excellence and success.

By setting meaningful goals, promoting our ASPIRE values and ASPIRE character programmes we are creating an environment for every child to ‘Turn Potential Into Excellence’.

Aspirational

To inspire all of our students to dream big dreams which extend their horizons beyond their expectations.

Success

To learn from failure, challenge expectations and drive for success.

Participation

To be fully involved in school life and to take an active part in lessons and make full advantage of the extra curricular opportunities provided.

Integrity

To promote the qualities of selflessness, courage, honesty, respect, commitment and the importance of doing the right thing.

Responsibility

To enable each student to develop confidence, self esteem and responsibility in all areas of school life.

Excellence




To strive for excellence and high achievement in everything we do.



MAT SPECIALIST SUBJECTS

By working together in The Mercian Trust, we are able to offer a full range of subject options across our different schools. Each school offers its own curriculum but we are also able to offer the opportunity to study a subject in another school across our trust. We have done this by creating a MAT Block: part of the working day which is timetabled not just in one school, but across all the schools working together in the Mercian Trust. You can choose to do a subject from the MAT Block in a different school. You are only able to take one subject on offer at another school; the other two must be studied at Shire Oak.

This may mean a bit of extra travelling a couple of times a week, but it will be worth going the extra mile if it allows you to take a subject which really interests you and prepares you for the post 18 pathway you have in mind. Transport will be provided to help you travel to another school as part of our trust.

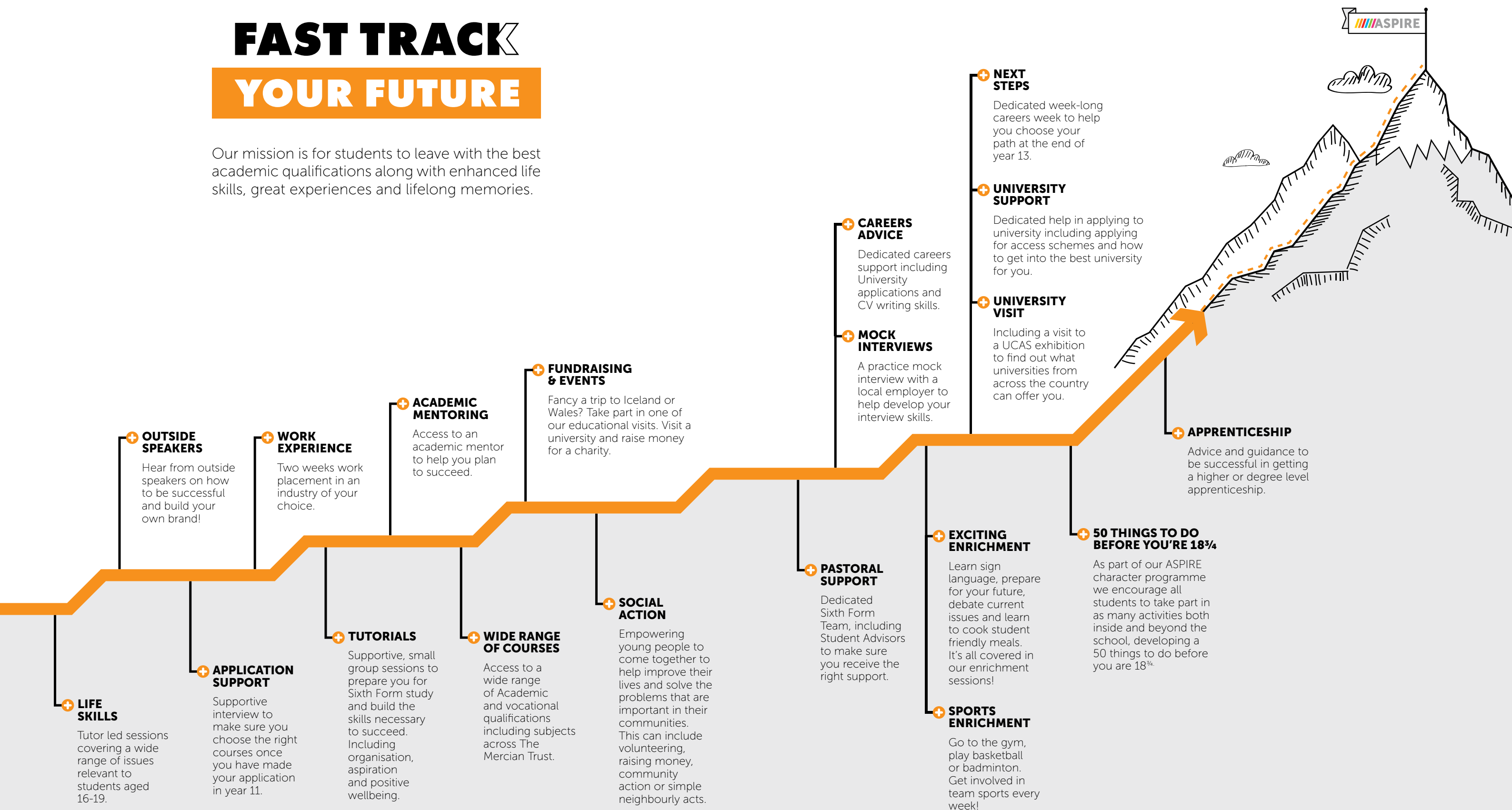
School	Subjects on offer (A Level)
 ALDRIDGE SCHOOL	Ancient History Music Politics
 QUEEN MARY'S HIGH SCHOOL	Drama and Theatre Studies
 QUEEN MARY'S GRAMMAR SCHOOL	Economics French



FAST TRACK

YOUR FUTURE

Our mission is for students to leave with the best academic qualifications along with enhanced life skills, great experiences and lifelong memories.



STUDYING AT SHIRE OAK

A few subjects can be taken without previous study. It is important therefore, that students check the individual subject specific requirements as detailed in this guide.

ENTRANCE CRITERIA

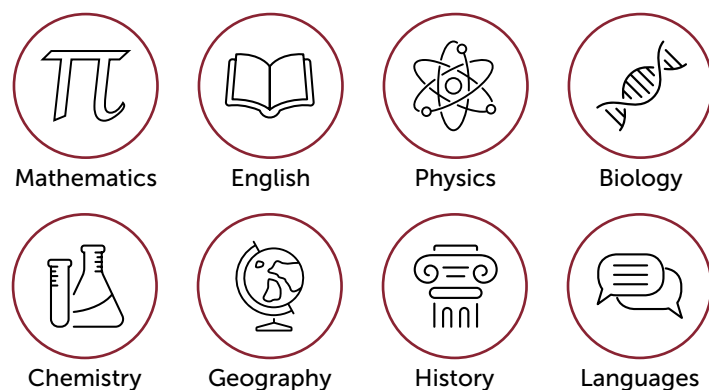
Studying in sixth form is a big step up from GCSE work and admission to sixth form is based on your academic attainment in GCSE or equivalent examinations. Entry Requirement is 5 GCSE grade 4 or above with a minimum of a Grade 4 in Maths or English and a Grade 3 in the other.

FACILITATING SUBJECTS

Many courses at university level build on the knowledge which you will gain whilst still at school.

All universities will want to know that the students they admit have prepared themselves in the best way possible to cope with their chosen course. For this reason, some university courses may require students to have studied a specific subject prior to entry; others may not.

However, there are some subjects that are required more often than others. These subjects are sometimes referred to as 'facilitating' subjects. The Russell Group Universities encourage students to keep their options open by choosing 'facilitating' subjects. Subjects that can be viewed as 'facilitating' subjects are:



Giving consideration to which subjects go best together and choosing facilitating subjects at A level may open a wider range of options to students at university. An A level qualification in any facilitating subject will open up a greater number of degree courses for students to choose from.

THINGS TO CONSIDER

CHOOSING COURSES

This is an important decision as your future career could depend on it. We feel that students should thoroughly research their sixth form study choices when choosing their courses.

If you have definite career plans then you should know what the entry requirements are in terms of specific examination passes. You should find out the career subject requirements and build up a well balanced programme of study leaving sufficient flexibility should you change your mind.

If your career plans are not so clear it is not vital at this stage. You will have time in the sixth form to get to know yourself more fully and consider your future in more depth. If this is the case your programme of study will probably be based upon looking at the two factors: "What am I good at?" and "What do I enjoy studying?"

If you are planning on going to university you should know what kind of requirements universities have and what courses they will accept. Using the UCAS website (www.ucas.com) to research courses and speaking to staff can help with this as each university and course is different.

STUDENTS SHOULD

- Choose subjects they feel most enthusiastic and confident about.
- Think carefully about the advice from their teachers, tutors and career advisors.
- Look carefully at the requirements of universities and degree courses which they are interested in. This is vital as a number of the most popular and prestigious universities may well declare preferences for particular subjects.
- Think about the assessment methods of the different types of courses. Students who find examinations particularly difficult might consider taking applied courses in which up to two-thirds of the assessment is by coursework.
- Consider which subjects go well together. By choosing 'facilitating' subjects at A level, a much wider range of options may be open to students at university. An A level qualification in any 'facilitating' subject will offer students a greater number of degree courses to choose from.
- Research into the courses that are on offer. Read the information about the courses we offer. Speak to members of staff and students who have taken the subjects at the Sixth Form Open Evening or contact the school to find out more information.

TIME ALLOCATION

Subject teaching will take place over approximately 10 hours per fortnight for each subject. In addition to this all students are expected, in all subjects, to spend at least the same amount of their own time on independent study, research and homework set by their teacher. Please note that the school day may finish at 4.00 for sixth formers due to twilight lessons.

ASPIRE character



50 THINGS TO DO BEFORE YOU'RE 18^{3/4}

As part of our ASPIRE character programme we encourage all students to take part in as many activities both inside and beyond the Academy, developing a 50 things to do before you are 18^{3/4}.



#29

SHIRE OAK SKI CLUB EXPLORE YOUR FULL POTENTIAL

School trips have a wealth of benefits including better cultural awareness, improved confidence and independence as well as forging stronger relationships and lifelong memories.



#46

NEVER DOUBT THAT A SMALL GROUP OF THOUGHTFUL, COMMITTED CITIZENS CAN CHANGE THE WORLD.

Shire Oak Academy students learn about and engage with the world around them and enjoy opportunities to experience it first-hand.

AN INTRODUCTION TO T-LEVELS



↑ EQUIVALENT TO 3 A LEVELS

T-Levels are an alternative to A levels, apprenticeships and other 16 to 19 courses. Equivalent in size to 3 A levels, a T-Level focuses on vocational skills and can help students into skilled employment, higher study or apprenticeships.

↑ AN INDUSTRY PLACEMENT

Each T-Level includes an in-depth industry placement. Students get valuable experience in the workplace; employers get early sight of the new talent in their industry.

↑ 80% CLASSROOM, 20% WORK

T-Level students spend 80% of the course in their learning environment, gaining the skills that employers need. The other 20% is a meaningful industry placement, where they put these skills into action.

↑ SUPPORTED BY BUSINESS

T-Levels were designed with leading businesses and are now supported by employers of all sizes to give students the workplace skills they need to succeed.

↑ SHIRE OAK T-LEVEL

At Shire Oak we are currently offering a T-Level in Education and Childcare. This involves spending three days a week in our sixth form learning and two days a week on a placement with a local nursery.

What do our students say about the T-Level in Education and Childcare?

“It’s an amazing experience for people wanting to work with children”
- Poppy Year 12

“The T-Level allows you to gain different knowledge away from the classroom”
- Megan Year 12

THE NEXT T LEVEL QUALIFICATION



T-LEVELS
THE NEXT LEVEL QUALIFICATION



T-LEVEL

EDUCATION & CHILDCARE

↑ ABOUT T-LEVELS

A T-Level is a two-year, technical study programme, designed to give young people the skills that industry needs. T-Levels will provide a mixture of:

- Technical knowledge and skills specific to their chosen industry or occupation
- An industry placement of at least 45 days in their chosen industry or occupation
- Relevant maths, English and digital skills

↑ T-LEVEL EDUCATION & CHILDCARE

The T-Level in Childcare and Education is a vocational programme aimed at young people who want to work in the education sector. It is designed to develop the advanced technical core skills and occupational specialisms required to work in a range of roles/settings with children from babies to 19 year olds.

As part of this programme you will spend 3 days in our sixth form learning about key topics to support your knowledge, which will include education, special educational need and disability, children's health, and child development. Alongside this you will attend two days on a placement to put all your knowledge into practice.

↑ EDUCATION & CHILDCARE COURSE OUTLINE

Equivalent to three A-levels, this T-Level course will help you boost your employment prospects by gaining extensive experience on a work placement in a real-world environment.

↑ YEAR 1: COMPLETE CORE UNITS OF STUDY

This will include:

1. Working with children, supporting education
2. Safeguarding, wellbeing and health and safety
3. Child development
4. Special Needs and disability
5. Behaviour management
6. Working with families, parents and carers

↑ YEAR 2: SPECIALISM IN EARLY YEARS

This will include:

1. Developing relationships with children to promote development
2. Supporting and promoting children's development

By completing this qualification, you could progress onto many different roles such as early years educator or teaching assistant, as well as gaining UCAS points to enable your progression onto study at university.

Here are some career routes you could follow by studying the T-Level:

- Primary Education
- Paediatric Nursing
- Childhood Studies
- Special Educational Needs and Disability
- Early years practitioner
- Child Psychology Play Therapy
- Social Work

All students will need to have a Disclosure and Barring Security Check.



A LEVEL ART AND DESIGN (FINE ART) - OCR

Course Overview:

Year 12 students will follow a program of varied topics. These will range from portrait work, still-life studies through to landscape projects.

Each project will begin with observational drawings, collecting visual resources, related art historical studies.

This programme of study has been devised to enable each student to pursue varied avenues of exploration, and to build a portfolio of varied work

The time allowed for each project is six weeks, on completion of these the students will under consultation with staff select a theme to explore for their study in Year 13.

On completion of their studies, there is an end of course examination which is 15 hours in duration. The examination will be spread over three days and students have approximately fourteen weeks preparation prior to this, from a pre-release exam paper.

Assessment:

Personal Investigation: (01) - 120 marks 60% of total A level
Non exam assessment project exploring a chosen theme. Alongside a 3000 work related study.
Externally Set Task: (02) - 80 marks 40% of total A level
15 hour exam over three days



ENTRANCE QUALIFICATIONS

At least a grade 6 at GCSE Art and Design is required. Competence in basic design work and observation drawing is important.

OPPORTUNITIES

Studying A level Art can equip students for opportunities leading to a variety of artistic university courses.

RELATED SUBJECTS

A level Art and other relevant subjects such as, Photography, History, Film Studies and Media Studies can lead to university courses or employment in graphics, interior design, film and video, fine art painting, sculpture and ceramics or retail display

A LEVEL BIOLOGY - OCR

Course Overview:

Biology A Level is a two year course and is split into six modules: Modules 1 to 6, combined with the Practical Endorsement, constitutes the full A Level.

The modules can be summarised as:

Module 1: Development of Practical Skills this module underpins the whole of the specification, and covers the practical skills that students should develop throughout the course. The practical skills in this module are likely to be assessed within written examinations and (for A Level only) within the Practical Endorsement.

Module 2: Foundations in Biology covering concepts required throughout the remaining modules.

Module 3: Exchange and Transport

Module 4: Biodiversity, Evolution and Disease

Module 5: Communications, Homeostasis and Energy (A Level only)

Module 6: Genetics, Evolution and Ecosystems (A Level only)

Assessment:

A Level Paper 1:

2 hours 15 mins with short, structured questions, extended answer questions and a multiple choice section.

A Level Paper 2:

2 hours 15 mins with short, structured questions, extended answer questions and a multiple choice section.

A Level Paper 3:

1 hour 30 mins with short, structured questions and extended response.

ENTRANCE QUALIFICATIONS

At least a grade 6 at GCSE Biology or at least a 6-6 in Trilogy Science and a grade 4 in GCSE Mathematics are necessary.

OPPORTUNITIES

A level Biology is an essential qualification for those students wishing to study degree courses in any biological subject. It is also useful for a variety of courses and jobs e.g. nursing, environmental studies, food research, medical and general laboratory work.

RELATED SUBJECTS

Other science subjects including Chemistry and Physics as well as Mathematics, Sports Studies and Psychology are good choices if choosing A level Biology.

BTEC LEVEL 3 EXTENDED CERTIFICATE IN BUSINESS

Course Overview:

If you are interested in a career in business then this course would suit. You will build up your knowledge and understanding of the business world and study four units, namely;

Exploring Business:

Learners will research and learn about local, national and international businesses in different sectors and will research the key ingredients for business success. Learners will complete 3 assignments that are internally assessed and externally moderated.

Developing a Marketing Campaign:

Learners will gain an understanding of how a marketing campaign is developed and will explore different stages of the process that a business goes through when developing its campaign and will develop their own campaign for a given product. This unit is assessed under supervised conditions. Learners will be given a case study two weeks before a supervised assessment period in order to carry out research. During the supervised assessment period, learners will be required to complete a task where they prepare a rationale and then a plan for a marketing campaign for a given product or service. BTEC, Edexcel sets and marks the task.

Personal and Business Finance:

Learners will study the purpose and importance of personal and business finance and will develop the skills and knowledge needed to understand, analyse and prepare financial information. This unit is externally assessed by a written examination set by BTEC, Edexcel. The examination will be two hours in length.

Recruitment and Selection Process:

Learners will explore how the recruitment process is carried out in a business and will give learners the opportunity to participate in selection interviews and review their performance. Learners will complete 3 assignments that are internally assessed and externally moderated.

The first two units are completed in Year 12 both units covered in Year 12 are mandatory, of which 1 is external. Students will complete a further two units which will lead to a qualification equivalent to one A Level.

ENTRANCE QUALIFICATIONS

It is not essential that students have studied Retail Business, In Key Stage 4 however, we are looking for students who have achieved 5 GCSEs at grade 9 - 4 including Maths and English.

OPPORTUNITIES

This course will lead to a number of options including the apprenticeship route such as administration, marketing and human resources. Further options include progression to university to study a wide range of business related degrees.

RELATED SUBJECTS

BTEC L3 Media Studies and ICT along with A level English Language are good subject choices to take with BTEC L3 Business.



A LEVEL CHEMISTRY - OCR

Course Overview:

Chemistry A Level is a two year course and is split into six modules; Modules 1 to 6 combined with the Practical Endorsement, constitutes the full A level. The modules can be summarised as:

The modules can be summarised as:

Module 1: Development of Practical Skills - this module underpins the whole of the specification, and covers the practical skills that students should develop throughout the course. The practical skills in this module are likely to be assessed within written examinations and (for A Level only) within the Practical Endorsement.

Module 2: Foundations in Chemistry - covering concepts required throughout the remaining modules

Module 3: Periodic table and Energy

Module 4: Core Organic Chemistry

Module 5: Physical Chemistry and Transition Elements (A Level only)

Module 6: Organic Chemistry and Analysis (A Level only).

Assessment:

A Level Paper 1: 2 hours 15 mins with short, structured questions, extended answer questions and a multiple choice section. (Assesses content from modules 1, 2, 3 and 5)

A Level Paper 2: 2 hours 15 mins with short, structured questions, extended answer questions and a multiple choice section. (Assesses content from modules 1, 2, 3 and 5)

A Level Paper 3: 1 hour 30 mins with short, structured questions and extended response. (Assesses content from all modules 1 to 6)

ENTRANCE QUALIFICATIONS

At least a grade 6 at GCSE Chemistry or at least a 6-6 in Trilogy Science and a grade 4 in GCSE Mathematics are necessary

OPPORTUNITIES

A level Chemistry is required for the study not only of Chemistry at higher education but for a number of other subjects - eg, those in the medical sphere. Chemistry is also highly regarded for many other courses, such as accountancy or economics.

RELATED SUBJECTS

A level Chemistry chosen with other sciences for example Physics or Biology along with Mathematics, Further Mathematics and Geography are all subjects that are good choices together.

A LEVEL COMPUTER SCIENCE - OCR

Course Overview:

This 2 year course will allow pupils to engage in a fast moving area of study with real world applications. It allows pupils to develop their practical skills in the context of solving realistic problems or carrying out investigation. Pupils will build on previous experience of programming in Python and learn new theory for using computers in the real world. It will allow them to learn about the programming concepts common across multiple languages and to learn about the fundamentals of computer systems.

Year 12:

During year 12 we will be studying the fundamentals of programming looking at functional programming, building on their practical knowledge from GCSE in Python and learning the concepts of object-oriented programming and how to create databases using SQL. We will also learn about the fundamentals of data representation looking at binary and the structure and function of a processor.

We will study systems software and boolean algebra building on knowledge learned at GCSE. Towards the end of the year, pupils will choose a topic to create their independent project on and will work on this into year 13.

Year 13:

In the second year of the course we will continue the practical work completing their independent project work for a chosen end user. There will be units looking at moral, social and legal issues of computing as well as software development and networks. Much of the year will be preparing pupils for their exams in the summer.

Paper 1 is a written exam lasting 2.5 hours worth 40% of the A-Level

Paper 2 is a written exam lasting 2.5 hours and worth 40% of the A-Level

The Non Examined Assessment (NEA) is worth 20% of the A-Level

ENTRANCE QUALIFICATIONS

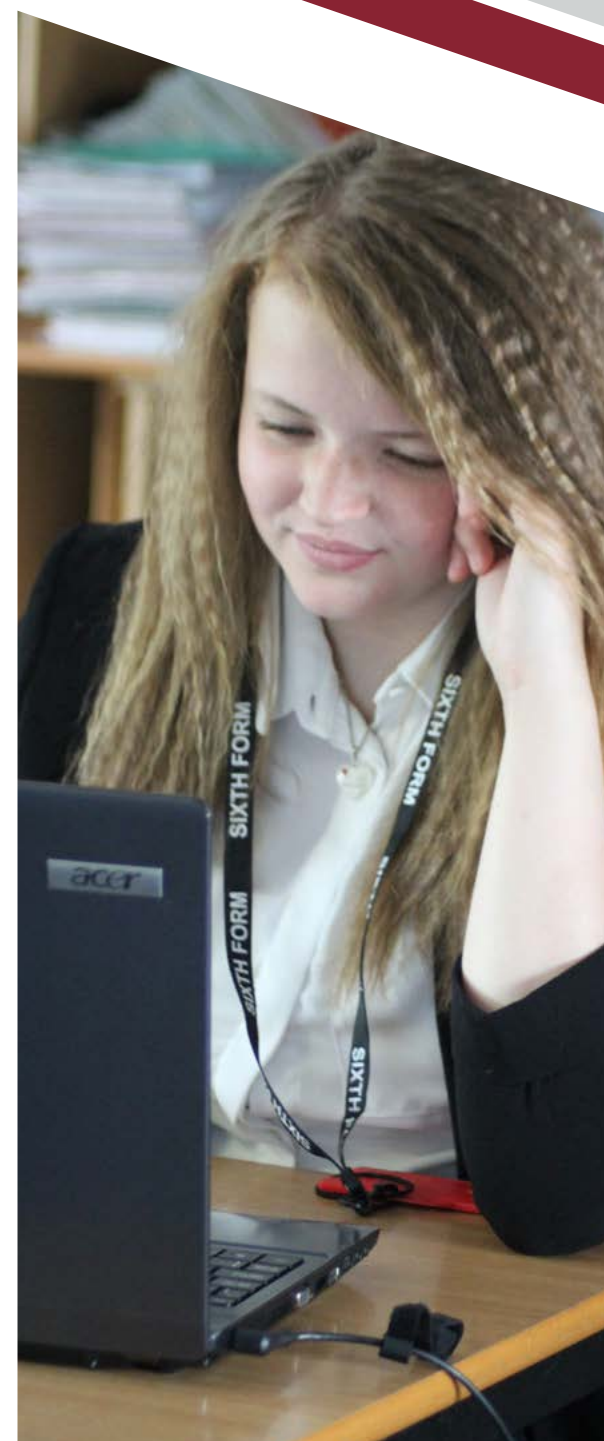
We require students to have a grade 5 in GCSE Mathematics. If you have studied Computer Science at GCSE we require a grade 4 in the subject. If pupils have not already studied Computer Science at GCSE then there is a requirement that pupils will study Python basics in their own time. An interest in problem solving is also essential.

OPPORTUNITIES

Progression to BSc Computer Science, Artificial Intelligence, Computing, Information Systems, Web Design and many others. Possible jobs include: games developer, database administrator, informations systems manager, IT consultant, systems analyst, networks engineer.

RELATED SUBJECTS

Mathematics, Further Mathematics and Physics are all good subject choices to select with Computer Science. Some university courses specify that it is essential to have A level Mathematics to take a degree in Computer Science.



LEVEL 3 DIPLOMA IN CRIMINOLOGY - WJEC

Course Overview:

An understanding of criminology is relevant to many job roles within the criminal justice sector, social and probation work and sociology and psychology. WJEC Level 3 Diploma in Criminology is a qualification with elements of psychology, law and sociology that complements studies in humanities. It offers exciting and interesting experiences that focus on applied learning, i.e. through the acquisition of knowledge and understanding in purposeful contexts linked to the criminal justice system.

Assessments:

There are four units that are studied; units 1 & 2 in year 12, and units 3 & 4 in year 13.

Unit 1: Changing Awareness of Crime (internally assessed through controlled assessment) looks at unreported crimes and the impact on society. Students get an opportunity to create their own campaigns to raise awareness for unreported crimes such as domestic violence.

Unit 2: Criminological Theories (externally assessed) draws on psychological and sociological theories to explain criminal behaviour.

Unit 3: Crime Scene to Courtroom (internally assessed through controlled assessment) entails looking at the personnel involved in criminal investigations, as well as the different techniques used such as forensics, offender profiling and eyewitness testimony.

Unit 4: Crime and Punishment (externally assessed) which examines the UK criminal justice system and the aims and forms of punishment and assesses the effectiveness of these in achieving social control.

External assessment is through a 90 minute exam with a total of 75 marks

ENTRANCE QUALIFICATIONS

Students should have achieved a grade 4 at GCSE English Language and a grade 4 GCSE in at least four other subjects.

OPPORTUNITIES

Further studies: BSc Criminology, BA Criminology, BA Criminology and Criminal Justice, BSc (Hons), Criminology and Psychology, LLB(Hons) Law with Criminology, BA (Hons) Criminology and Sociology, BA (Hons) Criminology, BSc (Hons) Psychology and Sociology, BSc Criminology with Law.

Career options: Aspects of the criminal justice system. National Probation Service. The Courts and Tribunals Service. National Offender Management Service

RELATED SUBJECTS

Sociology, Psychology, History, Geography, and Philosophy and Ethics are all good subjects to study with Criminology.

A LEVEL DRAMA AND THEATRE STUDIES - AQA



Taught At
**QUEEN MARY'S
HIGH SCHOOL**

Course Overview:

Drama and Theatre studies is a challenging subject suited to students who are creative, questioning and observant. Students who enjoy reading and watching plays, taking part in them; acting and directing will find this course extremely stimulating and rewarding. Group work and collaboration is at the heart of this course and students learn through experience, seeing theatre and making theatre for themselves. It is a varied course with students studying a wide range of theatrical styles, plays, practitioners and theatre conventions; learning about approaches to theatre and applying knowledge to practical and theoretical components.

During the course you will develop your acting skills, take part in workshops and develop your understanding of 'The Art of Performance'. You will also develop your writing skills as you critically analyse scripts and performances over the duration of the two years.

Skills:

Pupils of Drama will develop skills such as:
Knowledge and understanding of a range of practical drama skills including Acting, Directing, Costume, Set designing and Technical design.
Understanding of the major theatrical styles
Performance techniques – interpretation, voice, physicality, stage relationships with others
Collaborative skills with others to present a performance piece
Communication and problem solving skills
Design skills – interpretation, visual and design impacts and set creation
Technical abilities – lighting and sound design, special effects, technology and appropriate equipment
Practical skills – from making masks and building sets to creation of period style and make-up
Confidence, team-building, communication and other life skills.

You will be given the opportunity to devise original work, develop your understanding of how plays relate to historical, social and cultural context and consider the connections between theory and practice. In addition to Drama lessons students will go and see a number of live performances, access online Digital theatre shows and have the opportunity to work with a Theatre Company in a workshop context.

There are three components to the A-level:

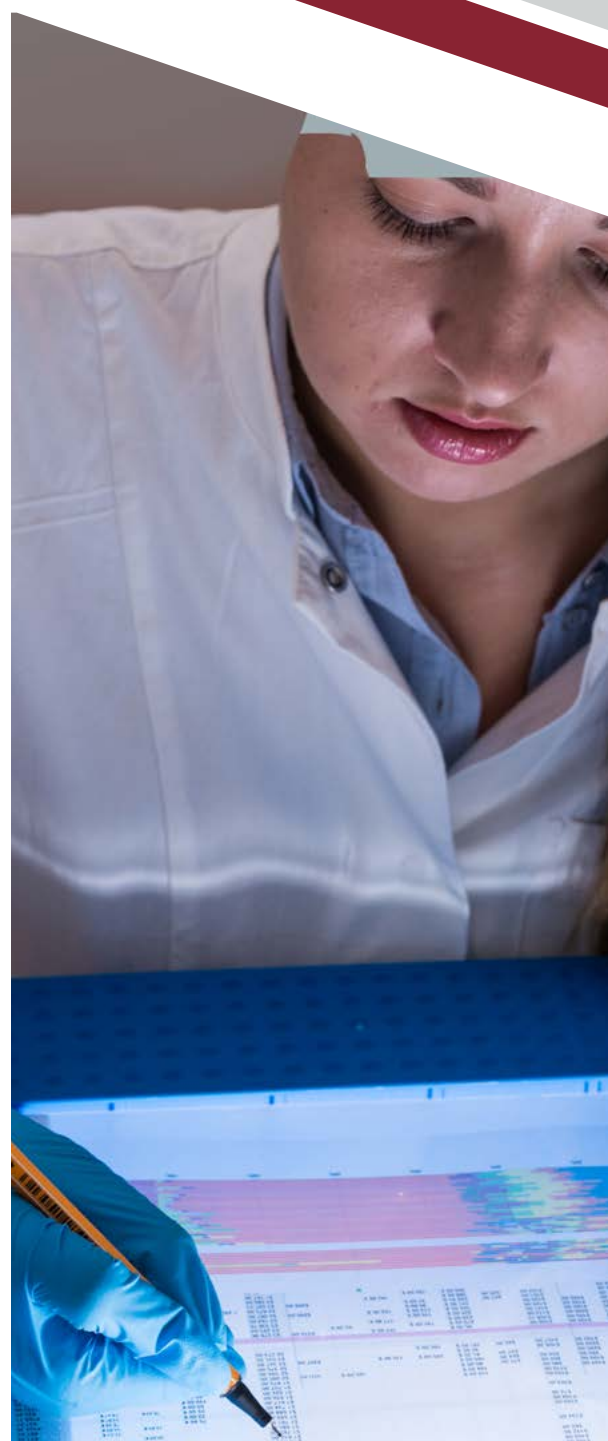
Unit 1: Drama and theatre:
Unit 2: Creating Original Drama:
Unit 3: Making Theatre:

ENTRANCE QUALIFICATIONS

Students should have achieved a grade 7 at GCSE English Language and a grade 4 GCSE in at least four other subjects.

OPPORTUNITIES

Career options: A-level Drama and Theatre Studies is useful for students considering Higher Education in any arts or humanities subject including English Language and Literature, Journalism, Dance, Music, Art and Design, and Media Studies. Students have also gone on to study Law, Speech Therapy, Drama Therapy, Psychology, Counselling and Teaching.
Further career option: Arts/Theatre Administration, Arts Journalism, Director, Actor, Designer, Playwright, Stage Management, Theatre Management.



A LEVEL ECONOMICS - AQA



Taught At
QUEEN MARY'S
GRAMMAR SCHOOL

Course Overview:

Studying A level Economics will allow students to apply economic theory to support analysis of current economic problems and issues, and encourage students to appreciate the interrelationships between microeconomics and macroeconomics.

The A level covers the following 14 topic areas:

*Indicates content will be a feature of the first year of study (Year 12).

Individuals, firms, markets and market failure.

1. Economic methodology and the economic problem*
2. Individual economic decision making
3. Price determination in a competitive market*
4. Production, costs and revenue*
5. Perfect competition, imperfectly competitive markets and monopoly*
6. The labour market
7. The distribution of income and wealth: poverty and inequality
8. The market mechanism, market failure and government intervention in markets*
9. The national and international economy
10. The measurement of macroeconomic performance*
11. How the macroeconomy works : the circular flow of income, AD/AS analysis, and related concepts*
12. Economic performance*
13. Financial markets and monetary policy*
14. Fiscal policy and supply-side policies*
15. The international economy

Assessments:

3 x 2 hour examinations:

Paper 1: Markets and market Failure . 80 marks (33.3% of A level).

Paper 2: National and international economy. 80 marks (33.3% of A level).

Paper 3: Economic principles and issues. 80 marks (33.3% of A level).

ENTRANCE QUALIFICATIONS

Students should have at least a grade 7 or above at Mathematics GCSE or a 7 in Business/Economics GCSE.

OPPORTUNITIES

Shares4schools - an exciting national school's competition where, as part of a team you get to invest £1,500 of real money into the stock exchange! You will meet your investors and aim to make a profit through buying and selling shares.

A LEVEL ENGLISH LANGUAGE - AQA

Course Overview:

Enjoy getting to grips with the English Language: its richness, its technicality, its diversity. Study the various forms and contexts of the English Language, with analytical methods and concepts underpinning the course. Find out how the language diversifies and changes through time, as well as exploring how we acquire language, going right back in time to childhood, where language acquisition is at its most interesting. You will also embark on your own writing journey, as you undertake an original writing piece, where you are able to explore your own techniques as a writer.

What do the units cover?

Paper 1: Language, the individual and society (40%)

You will analyse a whole range of texts, considering their features and how they have achieved their intended purpose. You will be expanding your knowledge of the English Language, building on skills already gained during GCSE. Additionally we study Language Acquisition - how children learn to talk and read - reflecting on the processes involved and factors that can influence key developmental skills.

Paper 2: Language diversity and change (40%)

You will study how the English Language has changed and altered, adapting to developments within society. There is also a consideration of the English Language spoken around the world and the impact that has had upon the vocabulary we use today. We cover a range of diverse topics considering language use. The differences between the language men and women use, along with language used within the workplace to convey power over others. Accent and dialect are also discussed and we study the language differences between different age groups, ensuring we have looked at a wide range of societal groups and the language used within them.

Non-exam assessment (20%)

The 'Language in action' unit allows you to explore a personal area of interest connected to your English language studies. This unit is assessed internally and moderated by the examination board.

You will be able to conduct a language investigation exploring an issue important to you. The other aspect of the NEA, is an opportunity to produce your own writing, with a commentary to supplement the work produced.

ENTRANCE QUALIFICATIONS

Students should have achieved Grade 6 or above in English Language GCSE examination and Grade 4 or above in GCSE English Literature

OPPORTUNITIES

English Language is a prestigious subject and is highly valued by Universities and employers, who recognise that English Language students possess the skills and knowledge which equips them for a range of career paths, such as journalism, the wider world of media, public relations, the public sector, and industry and commerce. Degrees in English Language often cross over and intersect with linguistics and creative writing, as well as other subjects, such as sociology, politics and history.

RELATED SUBJECTS

English Language can be combined with any other A level subjects, arts, humanities or sciences. It is a particularly useful A Level for many university courses and can lead to degrees in subjects as diverse as journalism and science.



A LEVEL ENGLISH LITERATURE - OCR

Course Overview:

English Literature is one of the most intriguing A-levels in the curriculum. If you want to grow your critical thinking skills and share a love of reading, then this course is designed for you. Get ready to form your own opinions about writing and build a detailed understanding of social and cultural issues that affect our lives today. Immerse yourself in the world of poetry, prose and drama, making meaning from the worlds created by writers past and present, and link them to the future. You will explore Gothic, American or Dystopian worlds, as well as more traditional texts, including the bard himself, Shakespeare! Visits to the theatre and places associated with the texts you are studying are also an important part of preparing for the examinations.

What do the units cover?

Component 1: 40% of A Level - 2 hour 30 min paper.

- Shakespeare - You will study one play in close detail, exploring Shakespeare's use of language and dramatic effects.
- Drama and Poetry pre-1900 - You will study contrasts, connections and comparisons between texts.

Component 2: 40% of A Level - 2 hours 30 mins paper.

- Comparative and Contextual study from a chosen topic.
- Close reading (unseen) in your chosen area.

Component 3: 20% of A Level - 2 essays.

This is a non examined module which is marked initially by teachers and sent off for moderation.

- Critical close reading OR re-creative writing piece.
- Comparative essay.

These allow you to pursue more detailed work in a field of particular personal interest, offering excellent preparation for study at undergraduate level.

ENTRANCE QUALIFICATIONS

Students should have achieved Grade 6 in both English Literature and English Language at GCSE.

OPPORTUNITIES

English Literature is a prestigious subject and is highly valued by Universities and employers, who recognise that English Literature students possess the skills and knowledge which equips them for a range of career paths requiring good communication, clear presentation of arguments and ideas, and the ability to understand and evaluate complex information. Career routes, such as, law, journalism, the wider world of media, public relations, politics, teaching, the public sector, industry and commerce are a popular choice for our students who have taken English Literature A-Level.

RELATED SUBJECTS

It can be combined successfully with Arts or Sciences. English Language, History, Philosophy and Ethics and Modern Foreign Language can all be studied alongside English Literature to give a strong link to future degrees.

A LEVEL FILM STUDIES - EDUQAS

Course Overview:

The British Film Industry is one of the most profitable and most successful in the world. Some of the most influential films of the last thirty years have come from the UK, and British talent is recognised the world over. Franchises like Harry Potter and Star Wars have relied upon British talent for their success, while awards ceremonies consistently recognise British talent. For those who want to do more than 'just watch films', Film Studies offers lessons where analytical skills gained at GCSE in English Literature, Photography and History can be applied to influential texts such as Pulp Fiction (1994), Casablanca (1943) and Pan's Labyrinth (2005).

The course is assessed via examination (70%) and coursework (30%). This shows the importance placed on the practical production of film during this course. Student coursework is 30% of the overall mark, and is completed individually. It will comprise the creation of a film, screenplay and digital storyboard. This will be accompanied by a detailed critical evaluation.

There are two examinations, each worth 35% of the overall grade. Students will study a wide range of films, including American films from the Classical and New Hollywood eras, American independent films and two British films. They will also be studying a selection of short films, documentary film and comparing films from different movements. Academically, Film Studies allows students to engage with debates such as auteur, spectatorship and postmodernism, as well as theories such as Reception Theory and post-structuralism. It is expected that students will read around their subject in their own time and research films and the film industry independently, to supplement what they will learn in lessons.

Pupil Quotes:

"Having teachers who have a genuine enthusiasm for the subject makes all the difference." Catherine, Year 13.

"The best thing has been expanding my mind to appreciate new genres of film." Charlotte, Year 13.

ENTRANCE QUALIFICATIONS

Students must achieve a grade 4 or above in GCSE English or English Literature and must have a keen interest in film.

OPPORTUNITIES

An A-Level qualification in Film Studies can be used to pursue a degree in Film (either theoretical or practical), Media, Visual Culture, Communication, Humanities or other more vocational courses. It will develop a range of transferable critical, analytical, creative and research skills. Alternatively, students can use this as a basis for a more specialist industry-based degree qualification.

RELATED SUBJECTS

A-Level Photography, English Language, English Literature, Business Studies, or Humanities subjects as well as BTEC L3 Creative Digital Media are all choices that work well together.



A LEVEL FRENCH - AQA



**Taught At
QUEEN MARY'S
HIGH SCHOOL**

Course Overview:

The course builds upon and develops the skills of speaking, listening, reading and writing which have been acquired in GCSE work. An important difference is that the subjects concentrate not on basic transactional language but on wider social, political, economic and cultural issues. The course will develop not only skills, but also understanding of the grammatical systems of the languages studied; and give a better insight into the way of life, history, geography, political system, economic life and customs of countries where the languages are spoken. Students may also have the opportunity to study the literature of the country and where possible to visit the theatre, cinema or watch video and on-line material.

Furthermore, experience of a working environment using languages is underlined by the possibility of a programme of work experience in Europe for Year 12 students and/or a study tour in the Summer

Assessment:

All exams are taken at the end of Year 13

Paper 1: Listening / Reading / Writing.

- Aspects of French-speaking society
- Artistic culture in the French speaking world
- Multiculturalism in French-speaking society
- Aspects of political life in French-speaking society
- Grammar

Paper 2: is a written paper assessing:

- One text and one film or two texts from the list set in the specification
- Grammar

Paper 3: Is the Speaking Test with Stimulus Card material followed by a more general conversation assessing:

- Individual research project
- One of four sub-themes i.e. aspects of French-speaking society or artistic culture in the French-speaking world or multiculturalism in French-speaking society or aspects of political life in French-speaking society.

ENTRANCE QUALIFICATIONS

Students must have achieved a grade 7 or above at GCSE to have a realistic chance of success in A Level French.

OPPORTUNITIES

Statistics show that employment amongst language graduates is second only to medicine and law. More and more employers expect a high level of competence in a modern foreign language and there are now a large number of degree courses with a language component. This is for all MFL entry. Career opportunities include Teaching, Interpreting / Marketing and Business.

A LEVEL GEOGRAPHY - AQA

Course Overview:

Geography is a modern, innovative and challenging subject that builds on the content studied at GCSE, providing students with subject knowledge of the physical and human world around them. It also provides a wide variety of transferable skills. The guardian recently published that geography is the must have A-level.

"In a world that increasingly values people who can work across the physical and social sciences, geography is all the rage".

At the end of this two year course students will be required to sit two exams worth 80% of the A-level (40% each exam). Questions in the exam will be multiple-choice, short answer and extended prose. Students will also submit a piece of coursework worth 20% of the A-level grade.

The two exams will be split into the key themes of geography:

Unit 1: Physical geography (40%) 2 hours 30 minutes exam- Including hazards, earthquakes and volcanoes, glacial environments and natural cycles including the carbon and water cycles
Unit 2: Human geography (40%) 2 hours 30 minutes exam- including urban environments, global systems and governance, population and the environment and place studies.

The final 20% is made up of school marked work:

Unit 3: Geographical investigation (20%)- A piece of coursework set and marked by the teacher. This will involve four days fieldwork across the two years investigating both human and physical geography.

ENTRANCE QUALIFICATIONS

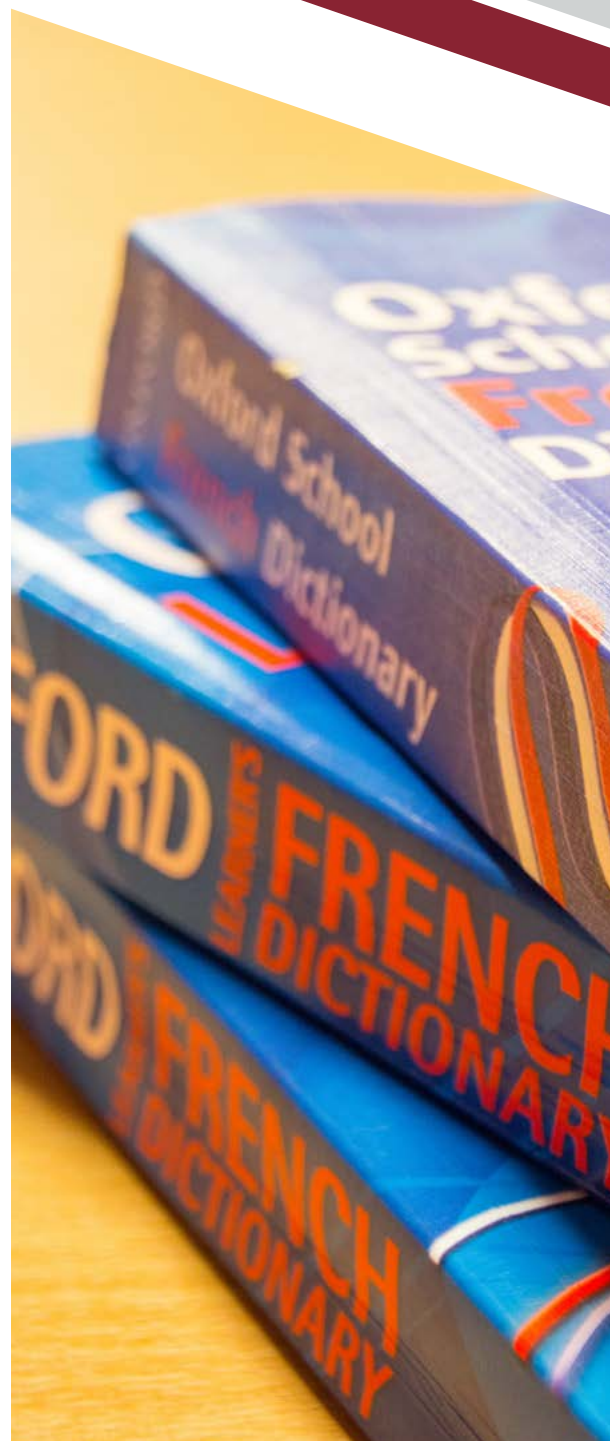
Students are required to have at least a Grade 5 in the higher tier at GCSE Geography alongside at least a grade 4 GCSE in both Mathematics and English Language.

OPPORTUNITIES

Geography is a subject that opens many doors. As well as higher education studying geography can lead to careers in business management, planning, tourism, retail administration, estate agency, resource management and surveying, as well as many other professions such as law and accountancy.

RELATED SUBJECTS

Geography can be usefully combined with almost any other A Level or Level 3 BTEC programme.



LEVEL 3 CAMBRIDGE TECHNICAL EX. CERTIFICATE IN HEALTH AND SOCIAL CARE - OCR

Course Overview:

There will be six units of work to complete that will be assessed either internally or externally.

The course will consist of the following:

Unit 1: Building positive relationships (coursework)
Unit 2: Equality, diversity and rights (exam)
Unit 3: Health, safety and security (exam)
Unit 4: Anatomy and physiology (exam)
Unit 5: Infection control (coursework)
Unit 10: Nutrition for health (coursework)

The content of these units is designed to further students understanding of what is important when working in a health and social care environment. We all need to develop positive relationships at work and understand the diversity in our communities. Whilst learning about our bodies and ways to keep fit and healthy are essential for everyone, not just those working in the health and social care sector. The above units provide a good basis for those wanting to work with people.

Assessments:

Examination 3 externally assessed units
Coursework 3 units of internally assessed coursework

ENTRANCE QUALIFICATIONS

Minimum entry requirements which are 5 Grade 4 or above with a minimum of a Grade 4 in Maths or English and a Grade 3 in the other.

OPPORTUNITIES

This qualification allows the opportunity for students to study for a degree in Health and Social Care, as well as other associated degree courses, such as Psychology or Biology.

The skills acquired in the qualification will provide an invaluable foundation for students wishing to pursue careers in nursing, psychiatric nursing, midwifery, child care, teaching, social work, counselling, policing, prison service and other health and social care related careers.

RELATED SUBJECTS

This qualification would work well alongside A Levels in Psychology and Biology or L3 Applied Diploma in Medical Science.

A LEVEL HISTORY - AQA

Course Overview:

A-level History qualifications have been designed to help you understand the significance of historical events, the role of individuals in history and the nature of change over time. You will gain a deeper understanding of the past through political, social, economic and cultural perspectives.

Assessments:

A-level students must take assessments in all three of the following units:

Unit 1: Breadth study - The Tudors: England, 1485-1603 - 2hr 30min examination (40% of A level)

This will be a study in breadth looking at issues of change, continuity, cause and consequence in this period.

Year 12: Part one: Consolidation of the Tudor Dynasty: England, 1485-1547.

- Henry VII, 1485-1509 ,Henry VIII, 1509-1547.
- Year 13: Part two: England: turmoil and triumph, 1547-1603
- Instability and consolidation: 'the Mid-Tudor Crisis', 1547-1563.
- The triumph of Elizabeth, 1563-1603.

Unit 2: Depth study: Democracy and Nazism: Germany, 1918-1945 - 2hr 30min examination (40% of A level)

This topic is a study in depth of a period of German history during which a newly developed democratic form of government gave way to a dictatorial Nazi regime.

Year 12: Part one: The Weimar Republic, 1918-1933

- The Establishment and early years of Weimar, 1918-1924
- The 'Golden Age' of the Weimar Republic, 1924-1928
- The Collapse of Democracy, 1928-1933

Year 13: Part two: Nazi Germany, 1933-1945

- The Nazi Dictatorship, 1933-1939
- The Racial State, 1933-1941
- The impact of War, 1939-1945

Unit 3: Historical investigation (Personal study) Civil Rights Movement in the USA 1863-1968 - 20% of A Level. This will be independently researched and written in the form of a piece of extended writing of between 3,000 and 3,500 words in length. It will cover a 100 year period tracing the developments in African-American civil rights in the USA from slavery to the Civil Rights acts of the 1960's.

ENTRANCE QUALIFICATIONS

Students will be expected to have obtained a Grade 5 or above at GCSE in the subject and a grade 4 in English Language to study History at A Level.

OPPORTUNITIES

A-level History will definitely help in any university course or career involving law, politics or archaeology and many more! Ali G (Sacha Baron Cohen) studied History at Oxford. Louis Theroux, Chris Martin (Coldplay), Sting and many others studied History.

RELATED SUBJECTS

Most subjects especially English Literature, Philosophy and Ethics, English Language and a Modern Foreign Language can all be studied alongside History to give a strong link to future degrees.



A LEVEL ANCIENT HISTORY/ CLASSICS - OCR



Taught At
ALDRIDGE SCHOOL

Course Overview:

"There is little as illuminating as civilisation's distant past, especially as we move towards a global age of increasing tensions. In the same vein, there are few subjects like Ancient History— within which our ancient pasts can be rediscovered and learnt from. Take the rise of 5th century Athenian demagoguery against modern American politics, for example: the likes of Cleon vs. Donald Trump serve as a clear parallel and prove the eternal relevance of the classical world"

Subject Content:

An A Level in Ancient History will allow you to study the ancient world, its momentous events and its larger than life personalities including Alexander the Great, Caligula and King Leonidas of Sparta. You will see how ancient civilisations like the Romans, Greeks and Egyptians have shaped the world that we live in today and develop a passion and curiosity for antiquity. The course will also allow you to gain a greater understanding of the literature of the period, including the first great historians like Herodotus, Thucydides and Livy.

Assessment:

Two exams at the end of Year 13. These will assess knowledge and understanding of the topics but also of the ancient source materials studied.

Greek component exam (2 hours 30 mins) will test your understanding of the Greek depth and period study;

- Greece and Persia
- The Rise of Macedon

Roman component exam (2 hours 30 mins) will test your understanding of the Roman depth and period study

- The Julio-Claudian emperors
- Roman Britain

ENTRANCE QUALIFICATIONS

Grade 5 in English and/or Grade 5 in one the following; History, Geography, Citizenship or RST

OPPORTUNITIES

Many of our students enjoy the subject so much, that they go on to study this subject at University, taking degrees in Ancient History and Classics. Given the critical thinking skills that Ancient History develops, students can also enter a wide variety of careers, including law, journalism and the media in general; advertising, accountancy, business management, marketing, public relations, the armed forces and the police; the civil service, the dramatic arts and education at all levels.

A LEVEL MATHEMATICS - EDEXCEL

Course Overview:

Mathematics is a 2 year course following the Pearson Edexcel specification. Students taking the course need to be organised, determined and positive. They must be prepared to work independently during their study periods and take responsibility for comprehensive note-taking throughout the course. Students taking the course will have access to online versions of textbooks with worked examples and questions for students to use.

Content:

Each topic will be assessed with an end of topic test:

Pure Mathematics 1&2

- Topic 1 - Proof
- Topic 2 - Algebra and functions
- Topic 3 - Coordinate geometry in the x-y plane
- Topic 4 - Sequences and series
- Topic 5 - Trigonometry
- Topic 6 - Exponentials and logarithms
- Topic 7 - Differentiation
- Topic 8 - Integration
- Topic 9 - Numerical Methods
- Topic 10 - Vectors

Statistics:

- Topic 1- Statistical Sampling
- Topic 2 - Data Presentation & interpretation
- Topic 3 - Probability
- Topic 4 - Statistical distributions
- Topic 5 - Statistical hypothesis

Mechanics:

- Topic 6 - Quantities and units in mechanics
- Topic 7 - Kinematics
- Topic 8 - Forces and Newton's Laws
- Topic 9 - Moments

Assessments:

Taken at end of Year 13:

- Paper 1: Pure Mathematics 1: 2 hours /100 marks
- Paper 2: Pure Mathematics 2 : 2 hours /100 marks
- Paper 3: Statistics & Mechanics : 2 hours /100 marks

Students will need a scientific calculator that has stored statistical functions, including distribution tables. The recommended model, by both the Mathematics department and the Examination Awarding Body (Pearson Edexcel), is the CASIO FX-991EX ClassWiz.

ENTRANCE QUALIFICATIONS

Students should have at least a grade 7 or above at higher level and be from set 2 or above, due to the level of work studied in Mathematics at A level.

OPPORTUNITIES

A qualification in Mathematics is recommended for careers such as banking, accountancy, engineering, management, science or computing

RELATED SUBJECTS

Mathematics can be combined with any other A-level subjects, arts or sciences. It is particularly useful for students studying a science.



LEVEL 3 BTEC NATIONAL EXTENDED CERTIFICATE IN CREATIVE DIGITAL MEDIA

Course Overview:

In an era of 'fake news', a critical appreciation of how messages are encoded in media texts is more important than ever. This highly vocational course aims to offer learners the skills they need to enter the media workplace or pursue further academic study, and promises to change the way they look at all media, from games to TV drama. Media offers students both a mirror of their own experience, and a window into the experiences of others. The course aims to balance this analysis with a wealth of practical skills. The objective of this exciting collaborative course is to create near-professional media products, whilst developing students' understanding of how the digital media industry functions and the ways it disseminates its messages to an audience.

The centre-assessed units are completed in lessons and involve analysing digital media such as websites, apps, photos and magazines, before students plan, prepare and create their own examples. This work allows students to pursue their own interests and be highly creative and independent. Work is completed electronically and students are encouraged to use time-management skills to meet deadlines.

Students will use professional programs such as Adobe InDesign to create their own digital magazine, managing their production time with skill and care. They will also study media representations, examining stereotypes in media as diverse as TV drama, video games and film extracts. A strong understanding of audiences will also be developed during the course.

Around 55% of the overall grade comes from centre-assessed units, and the rest is from externally-assessed work, including planning the production of a promotional video and a two-hour on-screen test.

ENTRANCE QUALIFICATIONS

It is recommended that a grade 4 in English or English Literature, ideally combined with an equivalent qualification in Level 2 Creative iMedia or its equivalent, would enable students to succeed with this course.

OPPORTUNITIES

A Level 3 qualification in Media offers a very broad scope in terms of both higher education and employment. There is a wide choice of courses available to further develop media skills and to learn an array of vocational skills.

RELATED SUBJECTS

A-Level Photography, Film Studies - a very successful pairing, English Language, English Literature, Business Studies or Art are all choices that work well together with any course in BTEC Creative Digital Media.

LEVEL 3 APPLIED DIPLOMA IN MEDICAL SCIENCE - WJEC

Course Overview:

Applied Medical science is a 2 year course split into 6 units. The course is ideal for anyone interested in a career related to healthcare and medical research.

The units can be summarised as:

Unit 1: Human Health and disease: 2 hour written exam paper (Part of this paper will be based on a pre-release article which is connected to the unit content)

Unit 2: Physiological measurements techniques: A portfolio of work will be produced and assessed by the class teacher. Along with witness statements from the teacher to say that the student has successfully carried out a range of physiological tests.

Unit 3: Medical science research methods: Learners will use their knowledge and understanding of research methods to conduct their own research. They will process the data they have collected and make evidence based conclusions. This unit will be assessed by the class teacher.

Unit 4: Medicines and treatment of disease: A portfolio of work, including a group presentation that is assessed by the class teacher.

Unit 5: Clinical laboratory techniques: This unit is externally assessed by a controlled assignment provided by WJEC. The assignment will be carried out over several sessions under exam conditions.

Unit 6: Medical case study: 1 hour 30 minute exam based upon 3 different case studies and integrating knowledge from units 1-5.

ENTRANCE QUALIFICATIONS

At least a grade 5 in biology and chemistry GCSE or 5-5 in trilogy.

OPPORTUNITIES

This qualification equips learners with both the scientific knowledge and the practical skills to work in a range of jobs within health care. It is well recognised by universities for those wishing to progress their studies in laboratory work, medical diagnosis and physiological science as well as patient treatment and nursing.



LEVEL 3 BTEC MUSICAL THEATRE / PERFORMING ARTS

Course Overview:

This course gives students the opportunity to develop their performing arts understanding and skills at a higher level which will prepare them for study in higher education, whether that be in the performing arts or in another subject.

The units can be summarised as:

Unit 1: Developing practitioners' work – in this unit learners' work to a brief set by the exam board. They explore and research the various different areas of the performing arts industry and complete a 2000-word essay in a 3 hour controlled assessment.

Unit 2: Developing skills and techniques for live performance – in this unit the group put on their own showcase evening and perform to a live audience.

Unit 3: Group performance workshop- This is set by the exam board in year two of the course. The students are given a stimulus/scenario in which they are work together to create a performance to an intended audience.

Unit 4: Optional unit – to be decided each year based on the cohort's strengths.

ENTRANCE QUALIFICATIONS

A merit or above in Level 2 Performing Arts. Other similar qualifications will be considered.

RELATED SUBJECTS

The Level 3 subsidiary diploma works with any number of A level and level 3 vocational courses as it shows you have confidence and independent skills. You are also able to show that you can perform confidently in front of an audience.

A LEVEL MUSIC - OCR



Taught At
ALDRIDGE SCHOOL

Course Overview:

The course offers a variety of alternatives which enable students to submit work demonstrating their strengths in the subject. There are three units of study. External assessments take place in May of Year 13. In units 1 and 2 Students may opt for Option A or B. This flexibility means they can gain up to 35% in the option for higher study and 25% in the option where they choose the smaller amount of study.

Unit 1: Performing (35% or 25%) - Here students have the opportunity to perform both as a soloist and in ensembles. Performances can take place on any instrument, including voice. A recital is prepared for Year 13 and should last either for six to eight minutes (Option A) or twelve to fifteen minutes (Option B)

Unit 2: Composing (25% or 35%) - Students are required to compose two pieces. One from a brief set by the board and one working from their own brief. For option A an extension to their composing comprises of four part harmony and two part counterpoint.

Unit 3: Listening and Appraising (40%)- This work is undertaken through the study of four areas. Areas 1 and 2 are compulsory and a further two are selected from areas 3-6. They are:
1: Instrumental Music of Haydn, Mozart and Beethoven;
2: Popular Song: Blues, Jazz, Swing and Big Band;
3: Developments in Instrumental Jazz from 1910 to the present day;
4: Religious Music of the Baroque period;
5: Programme Music;
6: Innovations in Music 1900 to the present day.

Music may be combined with Arts and Sciences and many universities offer combined degree courses. A number of colleges are now offering degree courses in Performing Arts where Music may be studied along with Movement and Drama, Art and Literature. Intending performers would usually apply to music colleges, through the CUKAS system. Music is welcomed by universities and colleges in particular even if the subject is not to be continued beyond that level. Aldridge School has a long tradition of sending young musicians to further education and has had students at all major conservatoires in the UK and major universities including Oxford and Cambridge It can also lead to a life- long cultural interest in the arts generally. Music brings people together and strengthens the local community. A level Music combines well with a wide range of A level subjects. It is highly regarded as an academic A level but it is practical and enjoyable.

ENTRANCE QUALIFICATIONS

If students have studied Music at GCSE they require a grade 6 to continue to A-level. Students also need to have Grade 5 ABRSM in their chosen instrument. Students who have not studied Music at GCSE need a pass in Grade 5 Music Theory – ABRSM.

OPPORTUNITIES

Musician, Conducting, Teaching, recording studios, member of orchestra, theatre, session players, TV companies, radio, film scoring, music composition, recording engineer.



A LEVEL PHILOSOPHY AND ETHICS - OCR

Course Overview:

This course provides a thought provoking programme of study where students will have the opportunity to engage in ethical debates, study the ancient origins of philosophy and examine the changing face of Christianity in the modern world.

There are three components to the Philosophy and Ethics course:

Philosophy of Religion

Tackling the 'big questions' raised by religious beliefs; you will explore philosophical language, the nature of God and arguments for His very existence. You will learn about the views of thinkers such as Aristotle and Plato, as well as more modern and controversial thinkers such as Sigmund Freud.

Ethics

You will study a range of ethical issues alongside the lives and theories of key thinkers such as Immanuel Kant and Joseph Fletcher. You will explore topics such as business ethics, sexual ethics and euthanasia as well as discovering the history and development of ethical reasoning.

Developments in Christian Thought

This will take you back to the origins of the Christian Church, delving into the complexity of Christian theology and how it continues to change. You will also discover how Christians are responding to the challenges of modernity including sexism, globalisation and multiculturalism. We also examine the role that German Christians should have had during Nazi Germany, and what constitutes 'good' Christian action.

Assessments:

This course is externally assessed by three, two hour exams on each of the components listed above.

ENTRANCE QUALIFICATIONS

Students should have at least a grade 5 or above in English Language. There is no requirement to have studied RE at GCSE.

OPPORTUNITIES

Students holding an A Level in Philosophy and Ethics are rated highly by university selection boards for courses requiring critical thinkers and high level academic study. This Philosophy and Ethics course is an exciting and personally challenging course to follow.

RELATED SUBJECTS

Those pursuing careers in Sociology, Psychology and Political Sciences, as well as many other subjects like History, will benefit from this course.

A LEVEL ART & DESIGN - PHOTOGRAPHY - OCR

Course Overview:

Photography at A level is an Art and Design based course.

Component 01: Personal investigation

Learners should produce two elements:

- a portfolio of practical work showing your personal response to either a starting point, brief, scenario or stimulus, devised and provided by you or your staff.
- A related study: an extended response of a guided 3000 words

Component 02: Externally set task

The early release paper will be issued to you by your staff from the exam board and will provide you with a number of themes, each with a range of written and visual starting points, briefs and stimuli.

Students select one of these themes to explore and develop over three months (February to April of Year 13). Students will then sit a three day exam to produce a final outcome for their project.

Assessments:

Personal investigation (01) - 120 marks non exam assessment (internally assessed and externally moderated) this will be 60% of total A level

Externally set task (02) 80 marks - 15 hours non exam assessment.

ENTRANCE QUALIFICATIONS

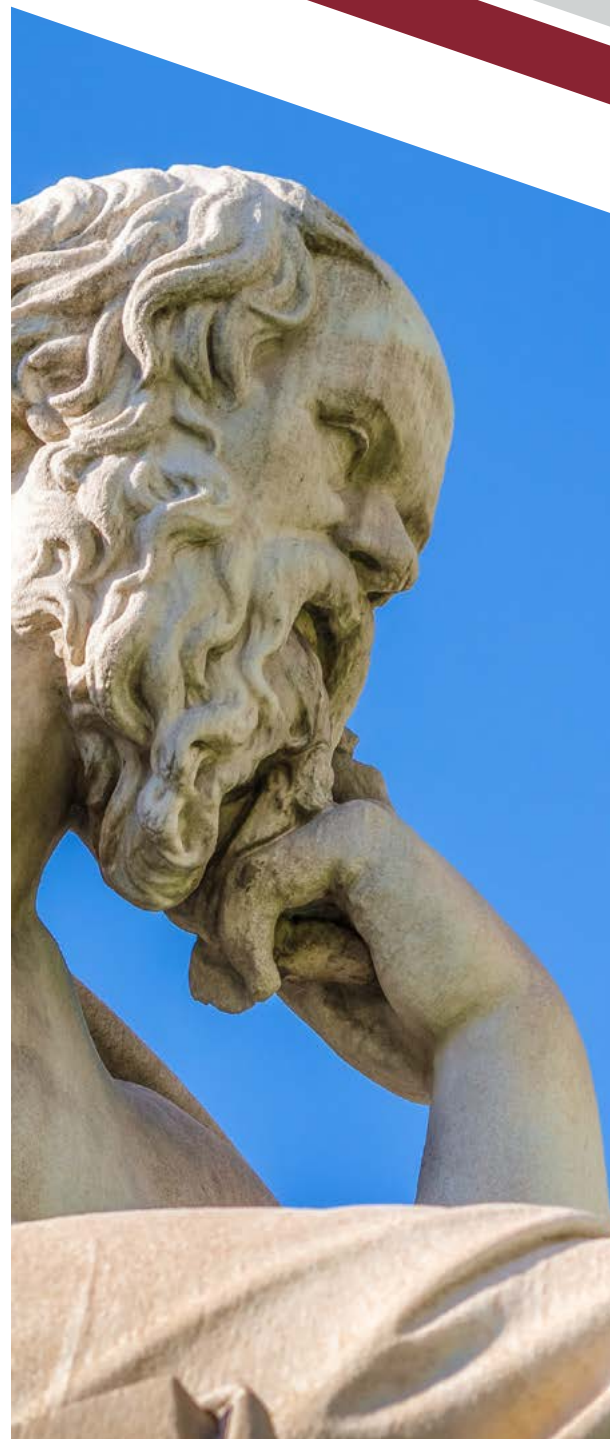
GCSE Photography or Art at grade 6 or above is required.

OPPORTUNITIES

A level Photography will give students the opportunity to develop their knowledge, understanding and creative skills within Art and Design, using Photography as a medium to explore and develop their individual ideas.

RELATED SUBJECTS

The course will prepare students for further education courses in creative related subjects or enter into employment within the creative industries.



A LEVEL PHYSICS - OCR

Course Overview:

"Physics is about how everything around you works and the great thing is, it has no limits."

During the first year of the A level course, students will complete four modules. These are:

- Development and Practical Skills in Physics
- Foundations in Physics
- Forces and Motion
- Electrons, Waves and Photons

In year 13 there are two additional modules. These are:

- Newtonian World and Astrophysics
- Particles and Medical Physics.

Assessments:

Modelling Physics Paper: 100 marks, 2 hours 15 minutes

Exploring Physics Paper: 100 marks, 2 hours 15 minutes

Unified Physics Paper: 70 marks, 1 hour 30 minutes

Practical Endorsement: Assessed internally over the two years

ENTRANCE QUALIFICATIONS

At least a grade 6 at GCSE Physics or at least a grade 6-6 in Trilogy Science. Students should have a good understanding of Mathematics, so a grade 6 in GCSE Mathematics is required.

OPPORTUNITIES

Physics is everywhere; in industry, computer games, the armed forces, government, universities, car garages.... A Level Physics really will open up so many doors for students. Those wanting to pursue a career in any scientific field, engineering or architecture will find it extremely beneficial. Those wanting to study law, sports science or those who want to become an electrician, psychologist or sound engineer, will all benefit from the problem solving and analytical skills they will gain over the A Level course.

RELATED SUBJECTS

Good A Level subject choices to take with Physics are Mathematics, Further Mathematics, Chemistry and Biology. The Russell Group of universities has named A Level Physics as a 'facilitating subject' which means it is useful for getting on to a wide range of university courses. The skills you develop during A Level Physics are very highly regarded, so if still undecided, studying physics will allow students to keep their options open.

A LEVEL POLITICS - AQA



Taught At
ALDRIDGE SCHOOL

Course Overview:

Unit 1: Government and Politics of the UK People, Politics and Participation:

An introduction to the political world:

Why do people vote?

Who do they vote for?

How do elections work?

Why do people take part in political protests?

Governing Modern Britain:

How is Britain governed?

How are laws made?

Who holds the real power in this country?

Unit 2: Government and Politics of the USA Politics of the USA

This unit looks at how Politics in the USA is conducted.

How is the President elected?

What is the difference between a Primary and a Caucus?

Why do Republicans and Democrats dominate?

How much power do pressure groups in the USA wield?

Government of the USA

How is the USA governed?

What is the difference between a senator and a governor?

How much power does the president really have?

What is the constitution?

Unit 3: Political Ideas

Students study 4 ideologies including the 3 core ideologies of liberalism, conservatism and socialism. They will also study one non-core ideology, Nationalism.

Assessments:

3 x 2 hour exams taken at the end of Year 13

ENTRANCE QUALIFICATIONS

Grade 5 in English and/or Grade 5 in one the following; History, Geography, Citizenship or RST.

OPPORTUNITIES

Students can enter a wide variety of careers, including law, journalism and the media in general; advertising, accountancy, business management, marketing, public relations, the armed forces and the police; the civil service, the dramatic arts and education at all levels.



A LEVEL PRODUCT DESIGN - OCR

Course Overview:

Design and Technology is an inspiring, rigorous and practical subject. OCR have worked closely with Further Education and Industry to ensure that the direction of the qualification supports progression beyond A Level.

Product Design is focused towards consumer products and applications; their analysis in respect of materials, process, components and marketability to understand their selection and uses in industrial and commercial practices of product development.

There are nine topic areas within the GCE specifications to guide both the NEA (Non Exam Assessment) and the content for examination, these are:

1. Identifying requirements
2. Learning from existing products and practice
3. Implications of wider issues
4. Design thinking and communication
5. Material considerations
6. Technical understanding
7. Manufacturing processes and techniques
8. Viability of design solutions
9. Health and safety

Assessments:

- Non Examined Assessment 65 hours 100 marks (scaled to 150 marks)
- Problem Solving Exam (23.3%) 1 hour 45 mins - 70 marks
- Principles Exam (26.7%) 1 hour 30 mins - 80 marks

ENTRANCE QUALIFICATIONS

It is not essential that students have studied GCSE Product Design. However students are required to have achieved a grade 5 on a DT related course or at least 5 GCSE 9 - 4 grades including Mathematics, English Language and Science.

OPPORTUNITIES

The Product Design GCE will prepare learners to make informed decisions about further learning opportunities and career choices, such as the field of manufacturing and engineering.

RELATED SUBJECTS

A level Product Design and other relevant subjects such as, Photography, Film Studies and Media Studies can lead to university courses or employment in product, graphic or engineering design.

A LEVEL PSYCHOLOGY - EDEXCEL

Course Overview:

Psychology is a science and is the study of brain and behaviour. We all have ideas about people and about ourselves, and psychology relates to those ideas but draws on scientific methods to build a body of knowledge about such issues. Psychology can be theoretical, looking at how the brain works and what drives our behaviour, including issues such as early childhood experiences and what happens to us as we develop. Psychology can be practical, such as in therapy and treatments as well as in the workplace, such as when devising advertisements or advising the police.

Content:

Unit 1: Social and Cognitive Psychology, Biological Psychology and Learning Theories

Unit 2: Criminal Psychology and Clinical Psychology

Unit 3: Methodology, Review of Studies and Debates in Psychology

"Studying psychology in the sixth form/ college will not only ensure you stay up-to-date with current issues and also develop the facilities to critically analyse a range of issues."

Assessments:

At A-level there are three exams, each account for one third of your A-level. The three exams last 2 hours and are worth 90 marks each. The exams consist of a mixture of short answer and extended writing questions.

ENTRANCE QUALIFICATIONS

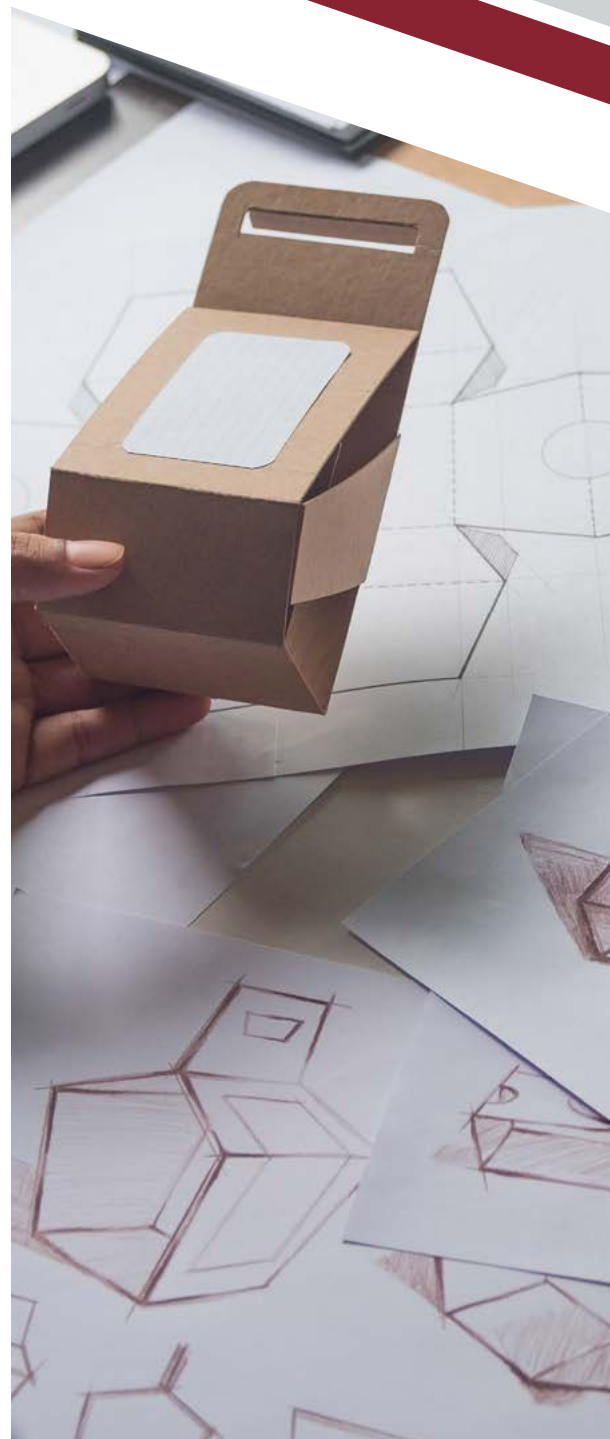
GCSE Psychology will be useful but this is not a prerequisite for studying A2 Psychology. Students must have achieved a GCSE grade 4 in English Language.

OPPORTUNITIES

This is a valuable qualification for many different career areas including: psychotherapy, psychologist, therapist, counselling, social and health work, teaching, nursing, human resources, local government, management, civil service and journalism to name a few.

RELATED SUBJECTS

Psychology can be combined with any other A-level subjects, arts, humanities or sciences. A few university courses studying Psychology ask for an A level in Science or Mathematics for entry.



LEVEL 3 CAMBRIDGE TECHNICAL EX. CERTIFICATE IN SPORT AND PHYSICAL ACTIVITY - OCR

Course Overview:

The OCR Level 3 Cambridge Technical Extended Certificate in Sport and Physical Activity introduces the sector for learners looking to build a career in sport, within one of its occupational areas. These areas include careers in exercise and fitness, coaching, leadership and sports development. This course provides a more practical, real-world approach to learning alongside a theoretical background, giving learners the knowledge, understanding and skills that they need to prepare for employment.

What the course will cover:

Over the 2 years you will study the mandatory units:

- Body Systems and the effects of physical activity.
- Sports Coaching and activity leadership.
- Sports Organisation and development.

Optional Units:

- Practical skills in sport and physical activity.
- Organisation of sports events.

These units will give you an understanding of sport in the wider contexts of coaching and leadership, anatomy and physiology, the body's short and long term responses to physical activity and the framework of sport in the UK and the organisations involved. You will also develop transferable skills such as planning, communication, adaptability and leadership.

The employer-endorsed course content is up to date and relevant, reflecting the blend of knowledge, practical skills, communication and team working skills needed to progress to further study or employment in the sector and beyond.

ENTRANCE QUALIFICATIONS

GCSE Grade 4 or above in PE, or Merit at Level 2 in a vocational qualification eg: OCR Level 2 Cambridge National in Sports Studies or Sport Science. Grade 4 or above in Maths and English at GCSE.

RELATED SUBJECTS

The qualification is designed to be taken as a part of a study programme alongside A levels or other vocational qualifications, for example A Level Biology, A Level Physics or BTEC Level 3 in Business or L3 Extended Certificate in Applied Science.

APPLYING TO SIXTH FORM

9TH NOVEMBER 2023- SIXTH FORM OPEN EVENT

To find out more about what Shire Oak Academy Sixth Form has to offer please visit www.shireoakacademy.co.uk/sixth-form.

10TH NOVEMBER 2023- APPLICATIONS OPEN

Application forms should be completed and submitted via the Shire Oak Academy website. Applications received after this period may have less flexibility of choice due to options blocks being created based on those who initially apply. Any application enquiries should be made to Lisa Hodgetts, Sixth Form Student Services Advisor, hodgetts.l@shireoakacademy.co.uk

15TH DECEMBER 2023- APPLICATIONS CLOSE

Further applications will be accepted during the summer however should Year 12 reach capacity, priority will be given to students who apply during this initial stage.

FEBRUARY 2024- INTERVIEWS

Interviews with Senior Staff commence. Conditional offers will be sent to applicants after the completion of the interviews. External candidates may also be invited to interview with Mr Jones

5TH JULY 2024- SIXTH FORM TRANSITION DAY

All applicants will be invited to attend this day

22ND AUGUST 2024- GCSE RESULTS DAY

All students wishing to join the sixth form will be required to complete an online enrolment form. A sixth form place will then be confirmed by Friday, 23rd August 2024.

ADMISSION DEADLINE

The final date for admission to sixth form is Friday 20th September 2024





SHIRE OAK ACADEMY

TURNING POTENTIAL INTO EXCELLENCE

Lichfield Road
Walsall Wood, Walsall
WS9 9PA

t. 01543 452518
w. www.shireoakacademy.co.uk
e. postbox@soa.merciantrust.org.uk

